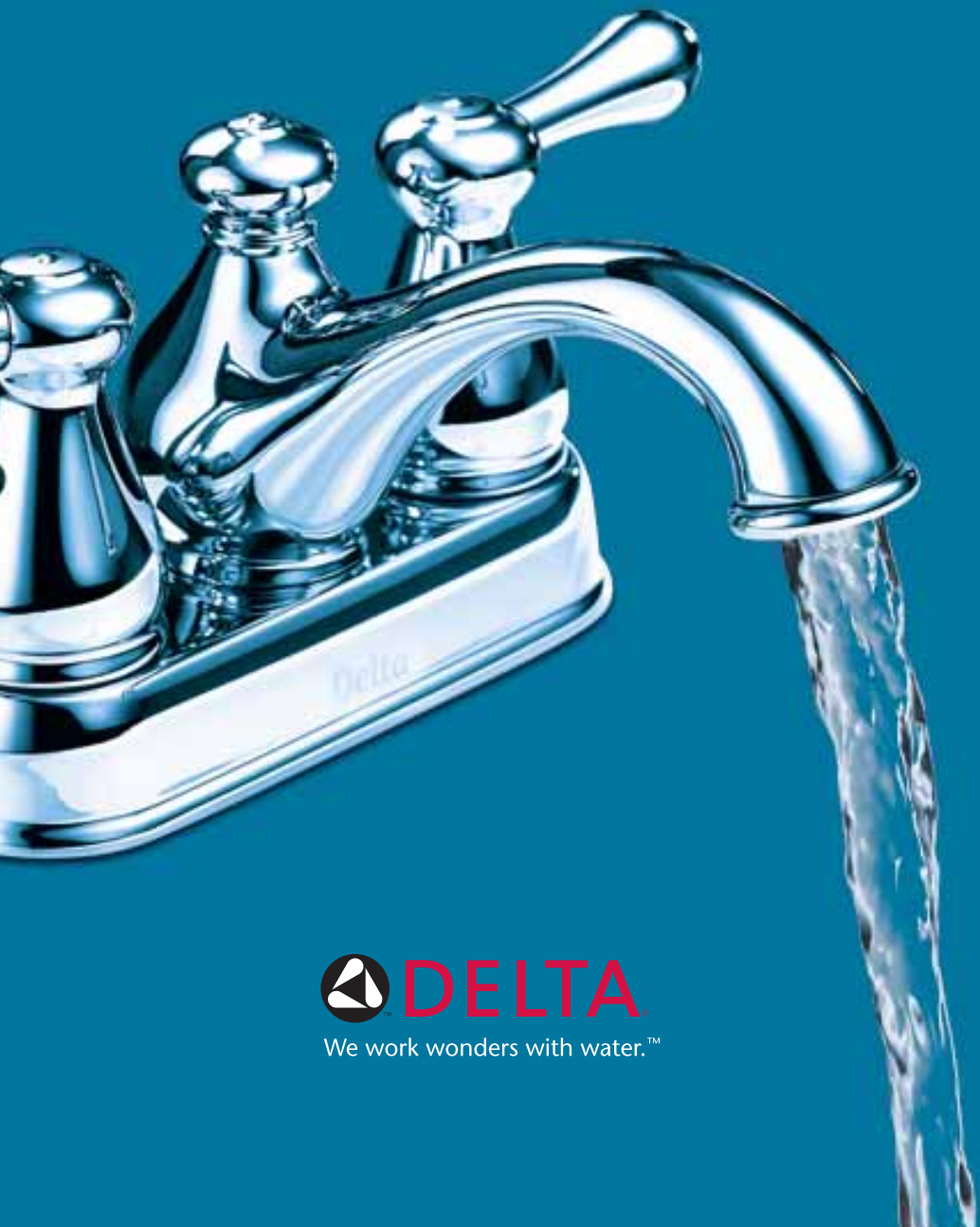


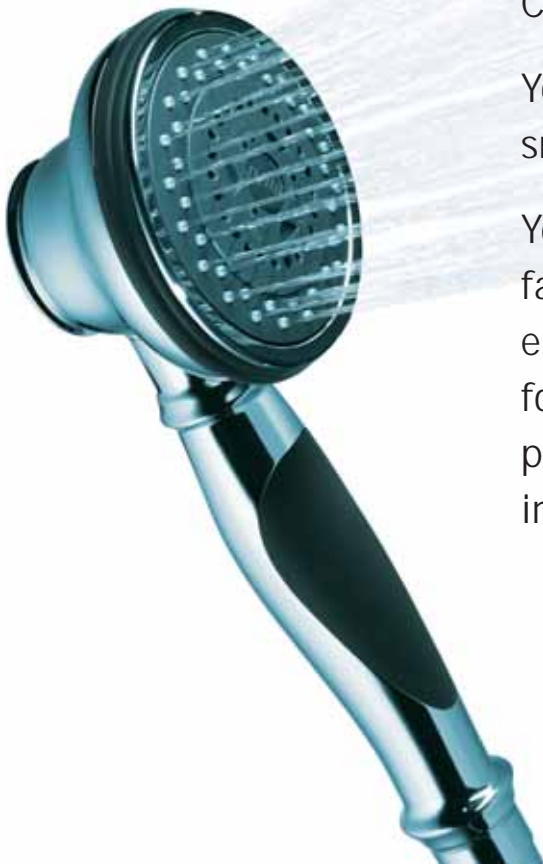
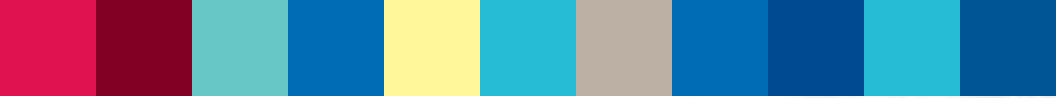
# Faucet Care and Maintenance Guide

Answers to frequently asked questions on how  
to keep your Delta® faucets at their best



**DELTA**

We work wonders with water.™



Congratulations.

You've made a smart choice.

Your new Delta® faucets are engineered for superior performance inside and out.

Importance of Registration 2

Early Maintenance 3

Cleaning Tips 5

Touch-Clean® Technology 6

Troubleshooting 7

Delta Warranty 10



## Why register your new Delta® faucets?

It's to your benefit to register your new Delta® faucets. When you do, your information is entered in our proprietary database which will enable us to better service you in the future. We'll be able to send you future product updates and maintenance information, as well as special promotions. And should you ever have any questions, having your products registered will expedite your customer service inquiries.

You should also know, the information you provide us will never be sold to or used by another company or third party. We respect your privacy and will only use your information to serve you.

To register your Delta faucets, visit [www.deltafaucet.com/warranty](http://www.deltafaucet.com/warranty). And for more detailed care and maintenance information, visit [www.deltafaucet.com/CustomerSupport](http://www.deltafaucet.com/CustomerSupport).

# Early Maintenance

## I just moved into a newly constructed home. What should I know about my faucets?

During the first few days you use your faucets, a small amount of construction debris may be flushed out of your pipe system. This happens even though the plumber flushes the pipes before completing work on your home. In addition, particles of solder, copper chips, Teflon® tape and other installation materials can get caught in aerators and showerheads. Occasionally, a chip might damage the valve seat that provides the watertight seal. The tips below will help you avoid problems. These procedures are a good idea to follow each time the water has been turned off for repairs in your home.

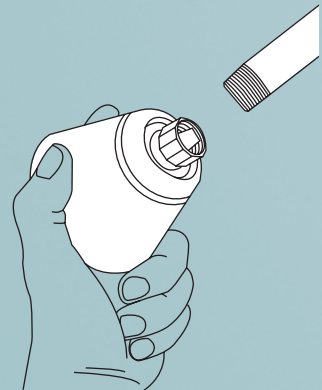
### TO FLUSH A KITCHEN OR LAVATORY FAUCET:

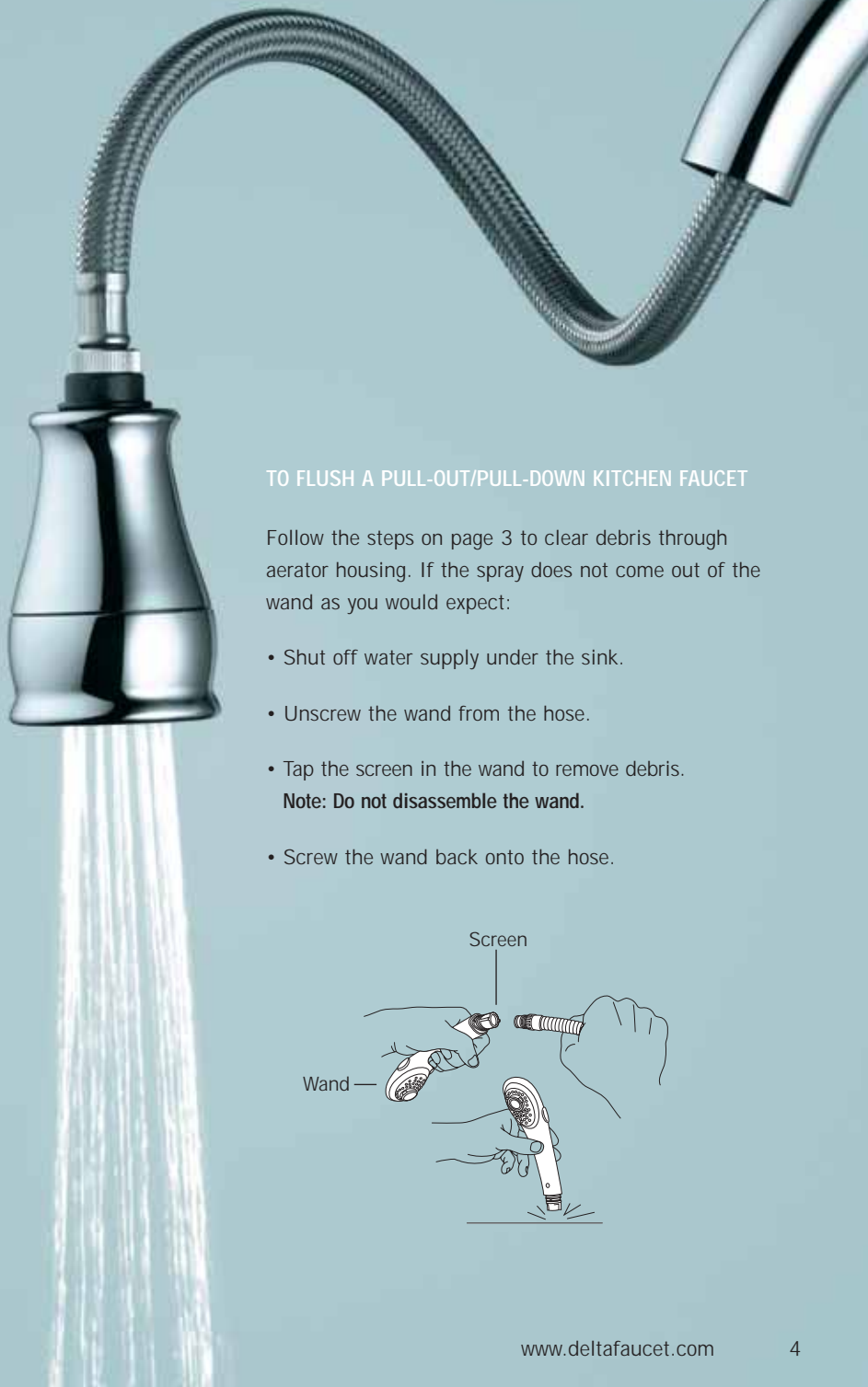
- Remove aerator and black sealing gasket above it.
- Turn faucet handle(s) to full on hot and cold mixed position(s) and flush lines for two minutes before turning off water with handle(s).
- Replace aerator.



### TO FLUSH A TUB / SHOWER FAUCET:

- Remove showerhead if applicable.
- Turn handle(s) to full on hot and cold mixed position(s).
- Flush spout two minutes without moving handle(s).
- If you have a showerhead, divert water to it and flush for two minutes.
- **BE SAFE!** Make sure cold water flows FIRST and that the adjustable rotational limit stop is properly set. Visit [deltafaucet.com/RotationalStop](http://deltafaucet.com/RotationalStop) for more info on setting the adjustable rotational limit stop.

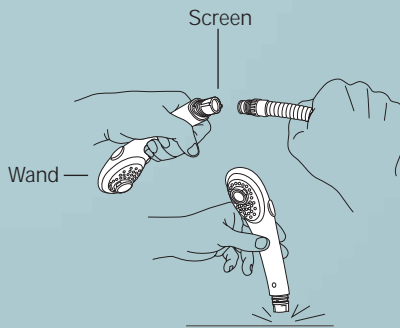




#### TO FLUSH A PULL-OUT/PULL-DOWN KITCHEN FAUCET

Follow the steps on page 3 to clear debris through aerator housing. If the spray does not come out of the wand as you would expect:

- Shut off water supply under the sink.
- Unscrew the wand from the hose.
- Tap the screen in the wand to remove debris.  
**Note: Do not disassemble the wand.**
- Screw the wand back onto the hose.



# Cleaning Tips

## How should I clean my faucet?

Wipe your faucet with a damp cloth and a mild household cleanser. Then dry with a soft cloth to retain luster and shine. Window cleaning products also work well.

## Which soaps or cleaners are recommended?

Although your faucet's finish is extremely durable, it can be damaged by harsh abrasives. Avoid industrial cleaners and abrasive cleaners, such as those used for toilet bowls, and heavy-duty scrub sponges. Harsh cleaners or abrasives can scratch some faucet finishes.

Many Delta® faucets are offered in Delta's Brilliance® finishes, like the popular Brilliance® Stainless. Developed with a patented process using Physical Vapor Deposition (PVD), Brilliance molecules are embedded deep into the faucet's surface, creating a bond that is virtually indestructible. These beautiful finishes, which give your home an instant decorator look, won't corrode, tarnish or discolor. They are designed to look like new for life.

## What's the best way to remove lime and mineral deposits from my faucet?

If using a mild household cleaner doesn't do the job, place a cloth soaked in white vinegar over the deposits for several hours, then try the mild cleanser again. Note: Drying the faucet with a soft cloth after each use will prevent mineral deposits.

Aged Pewter

Venetian Bronze®



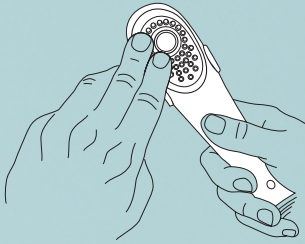
## How do I remove mineral deposits from the aerator?

Unscrew the aerator. Remove it along with the black sealing gasket above it. Rinse the gasket in clean water. Soak the aerator in a 50/50 vinegar and water solution for several hours.

## Touch-Clean® Technology

### How do I clean/remove mineral deposits from my pull-out/pull-down wand or showerhead?

The face of your pull-out/pull-down wand or showerhead incorporates Delta's Touch-Clean® technology. To ensure proper spraying, simply rub the rubber-like nubs on your Touch-Clean® pull-out/pull-down wand or showerhead face to loosen and break away residue and mineral deposits. If your wand or showerhead seems to need a deeper cleaning to return to a clean spray pattern, unscrew the showerhead or wand and soak it in a 50/50 vinegar and water solution for several hours.



Brilliance® Stainless

Chrome

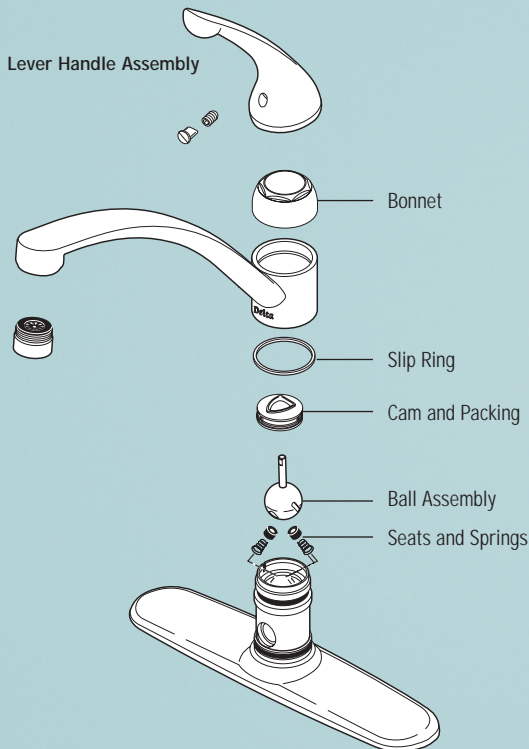


# Troubleshooting

Below you'll find some frequently asked questions and troubleshooting ideas. For more information on any topic or to find information on a problem you don't see here, visit [www.deltafaucet.com/CustomerSupport](http://www.deltafaucet.com/CustomerSupport) where you can search for more detailed instructions.

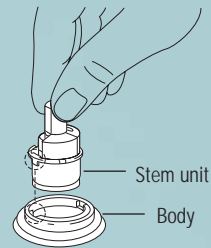
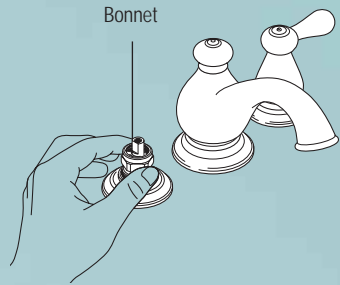
## What do I do if my single- or two-handle kitchen or lavatory faucet drips from the spout?

Your Delta® faucet is designed for leak-free performance. If you have already followed the early maintenance instructions at the beginning of this guide (see page 3) to attempt to flush debris from the system, and you're still experiencing the problem, it could be the valve's seats and springs. Depending on the water conditions in your area, through normal use, the seats and springs within your faucet's valve can become worn, eventually resulting in a leak from the spout. In order to stop the drip, simply replace the seats and springs. To purchase replacement seats and springs, call 1-800-345-DELTA or visit a local Delta® Genuine Parts dealer. Once you have your replacement parts, go to [www.deltafaucet.com/CustomerSupport](http://www.deltafaucet.com/CustomerSupport) and choose the appropriate link or use the search tool for complete instructions on how to quickly and easily replace your faucet's seats and springs.



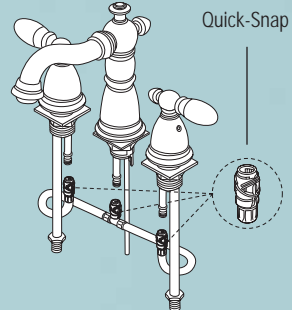
### What do I do if my single- or two-handle faucet leaks under the handle?

Remove the handle and try tightening the bonnet nut. If that does not work, you may need to replace the cam and packing on a single-handle faucet (see illustration at bottom of page 7) or the stem on a two-handle faucet (see illustration at right). Visit [www.deltafaucet.com/CustomerSupport](http://www.deltafaucet.com/CustomerSupport) for all of the information you need for a quick and easy fix.



### My kitchen or two-handle widespread faucet is dripping underneath the counter. How can I fix it?

It is extremely rare for a faucet to develop a leak under the counter. Newer Delta widespread faucets feature Quick-Snap® installation. If you have Quick-Snap connections and experience leaking at the connection points, Quick-Snap may not have been properly installed. Visit [www.deltafaucet.com/CustomerSupport](http://www.deltafaucet.com/CustomerSupport) for detailed information on how to properly engage your Quick-Snap connections or to find out how to solve the issue if your faucet does not have the Quick-Snap feature.



Delta®. We work wonders with water.

Have a question or need assistance?  
Please call 800.345.DELTA and one of our Customer  
Resource Representatives will be glad to help you.

And don't forget to register your faucets as soon as  
possible at [www.deltafaucet.com/warranty](http://www.deltafaucet.com/warranty).

For more detailed care and maintenance information,  
visit [www.deltafaucet.com/CustomerSupport](http://www.deltafaucet.com/CustomerSupport).



## LIFETIME FAUCET AND FINISH LIMITED WARRANTY

All parts and finishes of the Delta® faucet are warranted to the original consumer purchaser to be free from defects in material and workmanship for as long as the original consumer purchaser owns their home. Delta Faucet Company recommends using a professional plumber for all installation and repair.

Delta will replace FREE OF CHARGE, during the warranty period, any part or finish that proves defective in material and/or workmanship under normal installation, use and service. Replacement parts may be obtained by calling 1-800-345-DELTA (3358) (in the U.S. and Canada) or by writing to:

In the United States:

Delta Faucet Company  
Product Service  
55 E. 111th Street  
Indianapolis, IN 46280

In Canada:

Masco Canada Limited, Plumbing Group  
Technical Service Centre  
420 Burbrook Place  
London, ON N6A 4L6

This warranty is extensive in that it covers replacement of all defective parts and even finish, but these are the only two things that are covered. LABOR CHARGES AND/OR DAMAGE INCURRED IN INSTALLATION, REPAIR OR REPLACEMENT, AS WELL AS ANY OTHER KIND OF LOSS OR DAMAGES ARE EXCLUDED. Proof of purchase (original sales receipt) from the original consumer purchaser must be made available to Delta for all warranty claims. THIS IS THE EXCLUSIVE WARRANTY BY DELTA FAUCET COMPANY, WHICH DOES NOT MAKE ANY OTHER WARRANTY OF ANY KIND, INCLUDING THE IMPLIED WARRANTY OF MERCHANTABILITY.

This warranty excludes all industrial, commercial and business usage, whose purchasers are hereby extended a Five-Year Limited Warranty from the date of purchase, with all other terms of this warranty applying, except the duration of the warranty. This warranty is applicable to Delta® faucets manufactured after January 1, 1995.

Some states/provinces do not allow the exclusion or limitation of incidental or consequential damages, so the above limitation or exclusion may not apply to you. Any damage to this faucet as a result of misuse, abuse or neglect, or any use of other than genuine Delta® replacement parts WILL VOID THE WARRANTY.

This warranty gives you specific legal rights, and you may also have other rights which vary from state/province to state/province. It applies only for Delta® faucets installed in the United States of America, Canada, and Mexico.

©2006 Masco Corporation of Indiana



A MASCO COMPANY

Delta Faucet Company  
55 E. 111th St., P.O. Box 40980  
Indianapolis, IN 46280

Masco Canada Limited, Plumbing Group  
395 Matheson Blvd. East  
Mississauga, Ontario L4Z 2H2

©2006 Masco Corporation of Indiana  
DL-1559 06/06

